



# OFFICE RENTALS

**Renting office space at Burton Street**



# WELCOME

## To Burton Street



**Burton Street  
Foundation**

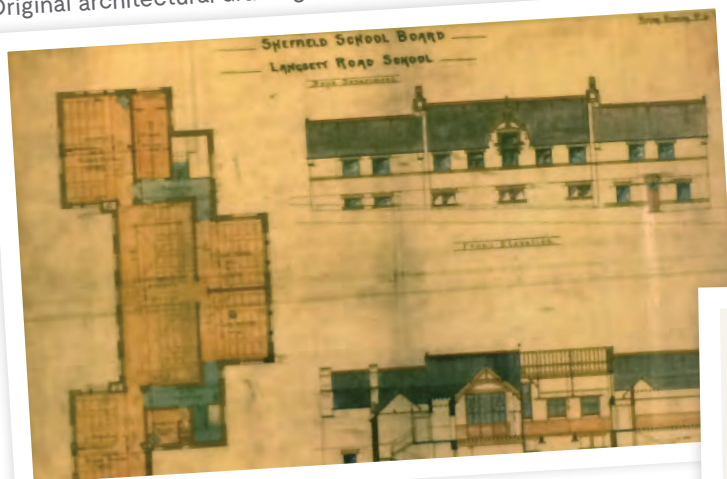
📍 57 Burton Street, Hillsborough,  
Sheffield S6 2HH

☎ 0114 233 2908

🌐 [burtonstreet.org.uk](http://burtonstreet.org.uk)



Original architectural drawings from 1879



Pupils and staff pose for Langsett Road School's last photo before its closure in 1976



The Full Monty's iconic 'Dole Queue' scene, filmed at Burton Street in 1997



## The Burton Street Story

Burton Street started its life in 1879, as Langsett Road School.

It remained open as a school for almost a century, ringing its bell for the last time in 1976. After being put to various small scale uses, it finally fell into disrepair in 1992 and by 1995 was scheduled for demolition.

This is where things get interesting...

The local community didn't want to see the old school demolished. They occupied the buildings and formed a new organisation called the Burton Street Foundation.

They quickly began making great use of the site by running various clubs, events and community services. This proved there was a need for it to remain, and eventually the Burton Street Foundation took ownership of the site.

Two decades later the beautiful Victorian buildings are a vibrant community hub. Hundreds of people use the site on a daily basis, and a huge range of activities take place.

It's a pretty big organisation now, but Burton Street has never lost its soul. That's what makes it the special place it is.

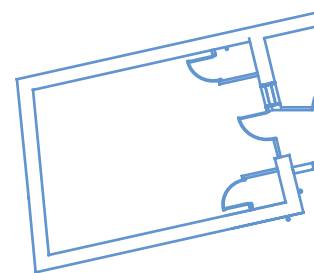
# Langsett Building

The Langsett building is home to most of Burton Street's office rental space. The complex stretches over two floors, and extends out into the original school's bike sheds, which have been renovated to a high standard. Everywhere you look there are interesting spaces and period charm.

The high ceilings, large windows and spacious feel create the perfect environment for any creative or socially minded business to live, to thrive and to grow.



= Offices we  
let



## Bike Sheds

LE3-LE12

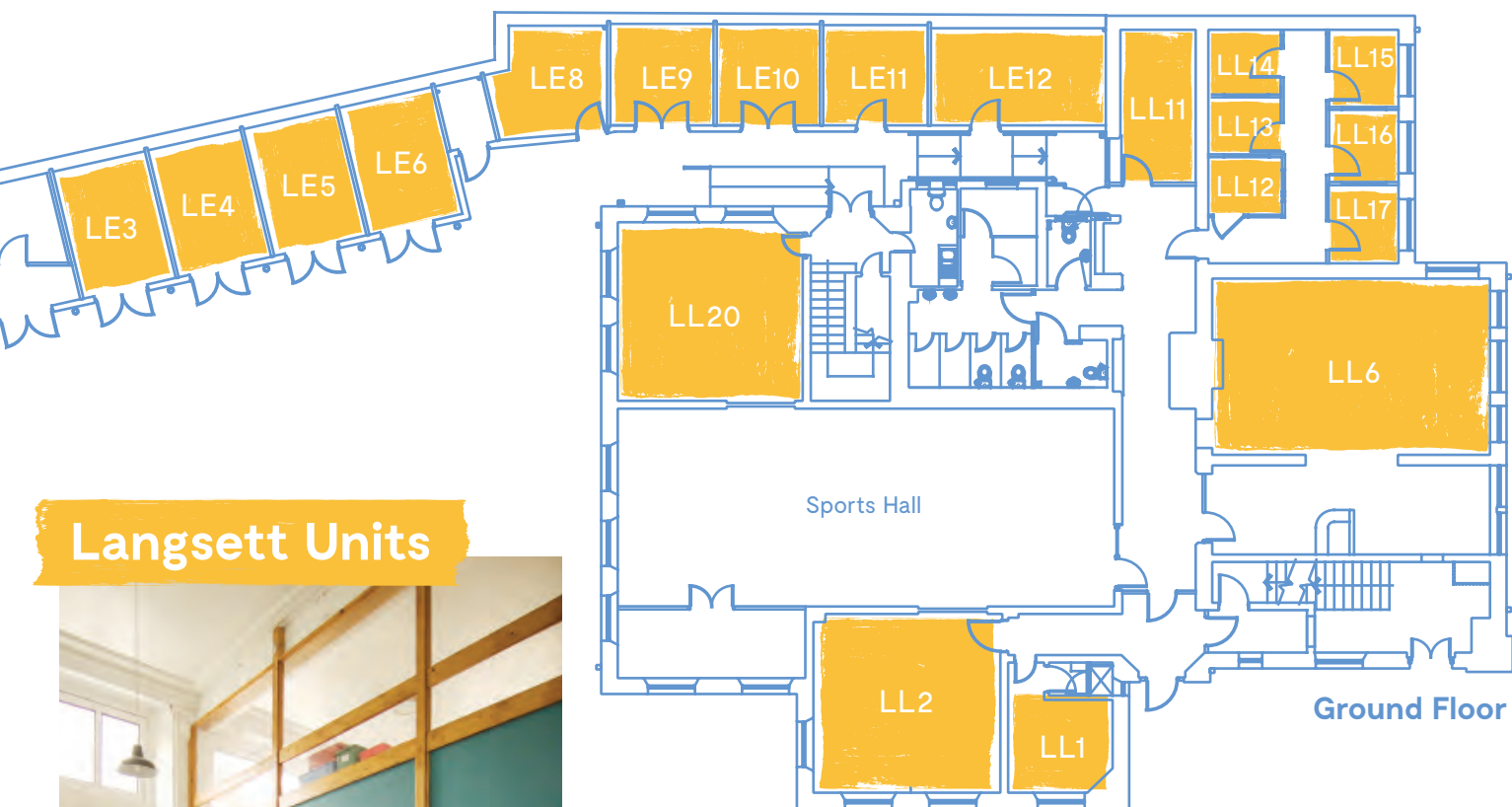


## Pod Offices

LL12-LL17



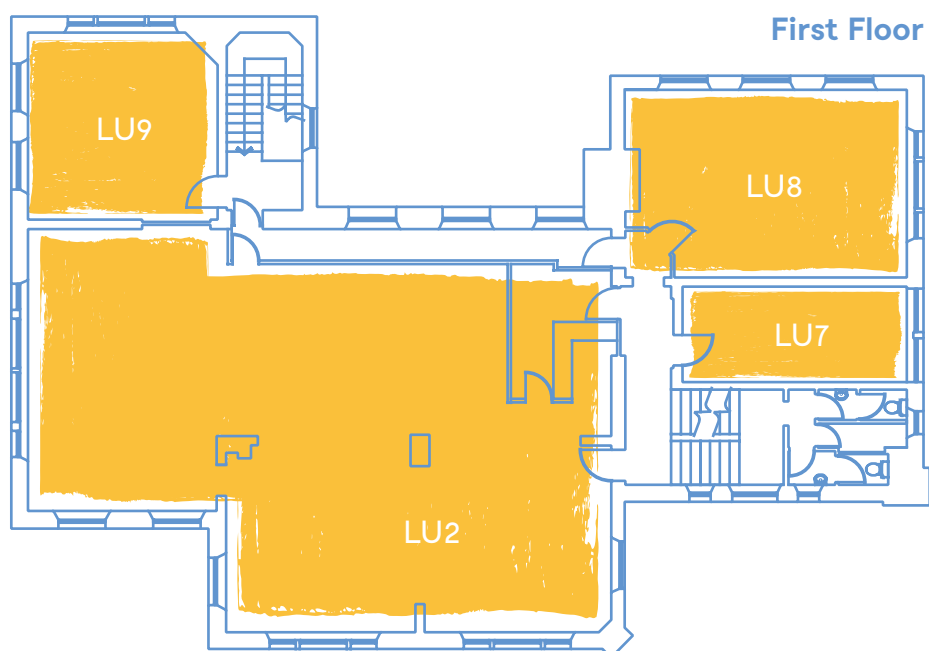




## Langsett Units



Ground Floor



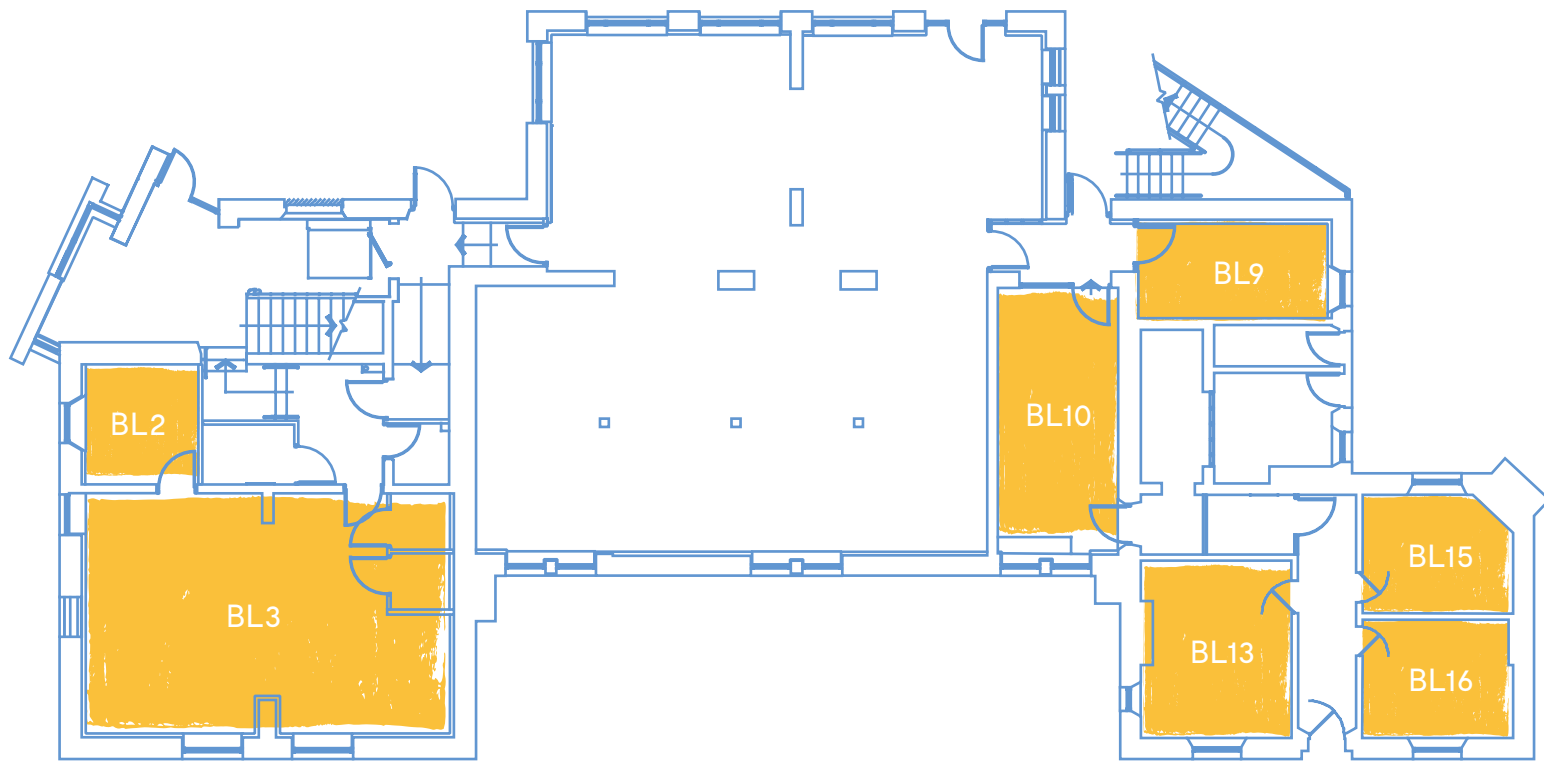
First Floor

## On Site Cafe



# Burton Building

The Burton building is the hub of the site. this is where out monthly Bistro takes place, we have a bar upstairs and lots of community groups use our famous Burton Hall for their needs. On the ground floor we have the cafe, it's everyones favourite place and a great spot to inrteract with other users of the site. Plus, the delicious culinary smells wafting through your door will be sure to get your tummy rumbling.



## Vibrant community hub



# Meeting & Conferencing

**Burton Street offers a range of meeting and conferencing facilities to suit all sizes, events and budgets.**

From small community meetings to large scale, professional conferences, from pop up cinema nights to glamorous weddings, our team can handle it all.

First class catering is always available, be it a finger buffet or a four course meal, and the fully equipped, staffed bar is available to hire for evening events.



**Burton Street is used by upwards of a thousand people each week.**

Over the past twenty years the site has gone from derelict school to a vibrant, popular and well loved community hub.

The various buildings and surrounding land are in use from early morning until late at night, all week round, by a diverse mix of people from the local community and beyond.

You won't find many places like Burton Street. It's a pretty special place.





## The details

### Benefits

- Prices from £157.50 per month
- Flexible easy in, easy out arrangements
- Use us as your registered address
- Reception staffed 9am–5pm Mon–Fri

### Additional facilities

- Meeting and conferencing space
- Room Hire
- On-site cafe
- Event catering

### Utilities

- Heat, light and power included
- Phone (VOIP) optional
- Data (Fibre) optional
- Pigeon hole in our main reception
- Free secure WiFi

### Transport

- Bamforth Street tram stop (0.2 mi)
- Hillsborough Interchange (0.3mi)
- Easy access from Penistone Rd (A61)
- Ample, free on-site parking
- Cycle racks

If there's anything else you want to know, please get in touch

Tel  
**0114 233 2908**

Email  
**[admin@burtonstreet.org.uk](mailto:admin@burtonstreet.org.uk)**